



Soliker

...WITH RENEWED ENERGY

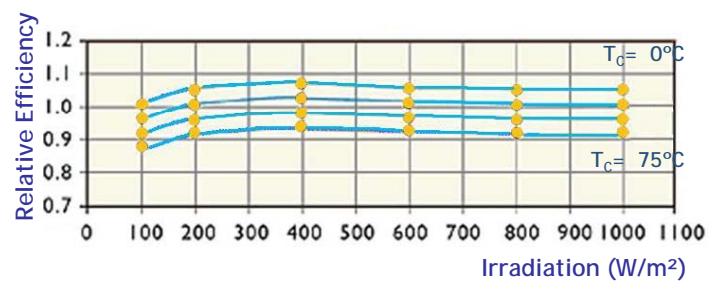
SOLIKER PV-49

CONSTRUCTION FEATURES

TYPE	a-Si/a-Si Cells (tandem)
GLASS	Float glass Front thickness 3,2 mm Back thickness 3,2 mm
ENCAPSULANT	Glass - EVA - Glass
FRAME	No (optional)
DIMENSION	1245 x 635 x 6,5 mm
AREA	0,79 m ²
WEIGHT	13,2 kg

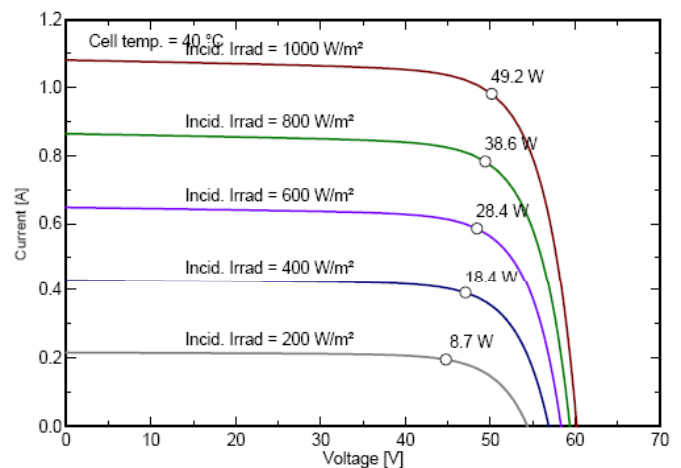
ELECTRICAL FEATURES (STC)*

INITIAL MAXIMUM POWER**	55 Wp - 60 Wp
MAXIMUM POWER, P _{máx}	49 Wp ± 3%
MAXIMUM POWER POINT VOLTAGE, V _{máx}	51,7 V
MAXIMUM POWER POINT CURRENT, I _{oc}	64,5 V
OPEN CIRCUIT VOLTAGE, V _{oc}	0,95 A
SHORT CIRCUIT CURRENT, I _{sc}	1,050 A
TEMPERATURE COEFFICIENT, P _{máx}	-0,22 %/°C
TEMPERATURE COEFFICIENT, V _{oc}	-0,33 %/°C
TEMPERATURE COEFFICIENT, I _{sc}	+0,09 %/°C
MAXIMUM SYSTEM VOLTAGE, V _{sys}	1000 Vcc
OPERATION TEMPERATURE, T _c	-40°C....+85 °C



* Standard test conditions (STC): 1000W/m², AM 1.5 and T° 25°C.

**The initial nominal power may be aprox. 18% higher than the nominal power.





Soliker

...WITH RENEWED ENERGY

SOLIKER PV-49

JUNCTION BOX

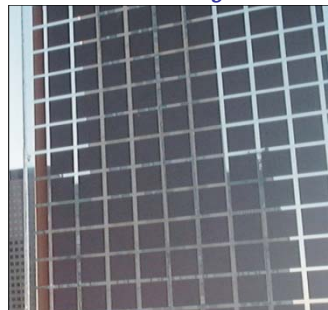
DIMENSION	78 x 52 x 15,5 mm
PROTECTION TYPE	IP67
CONNECTOR	TYCO
CABLE SIZE	4 mm ²
CABLE LENGHT	600 mm



Connection Box

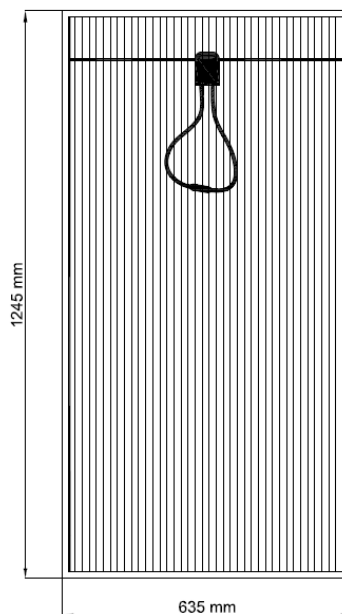


Architectural integration



Special Modules

DIMENSION



GUARANTEE

MANUFACTURER GUARANTEE	5 Years
PERFORMANCE GUARANTEE	90% (10 Years), 80% (25 Years)



Quick and easy installation



FACTORY

EI Navazo - Ctra. de Candelario, Km. 1,8
 37700 Béjar · SALAMANCA (Spain)
 Tel.: +34 923 400 400 · Fax: +34 923 400 154
 info@grupounisolar.com · www.grupounisolar.com · www.soliker.com

BUSINESS ADDRESS

Playa de las Américas, 2 Edif. Codesa 2
 Ctra. La Coruña (Salida Las Matas) · 28230 Las Rozas · MADRID (Spain)
 Tel.: +34 916 305 893 · Fax: +34 916 301 071
 comercial@grupounisolar.com